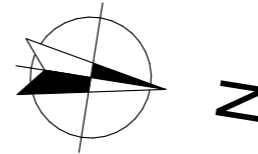


LES BORÉALES

DE SAINT-PRYVÉ

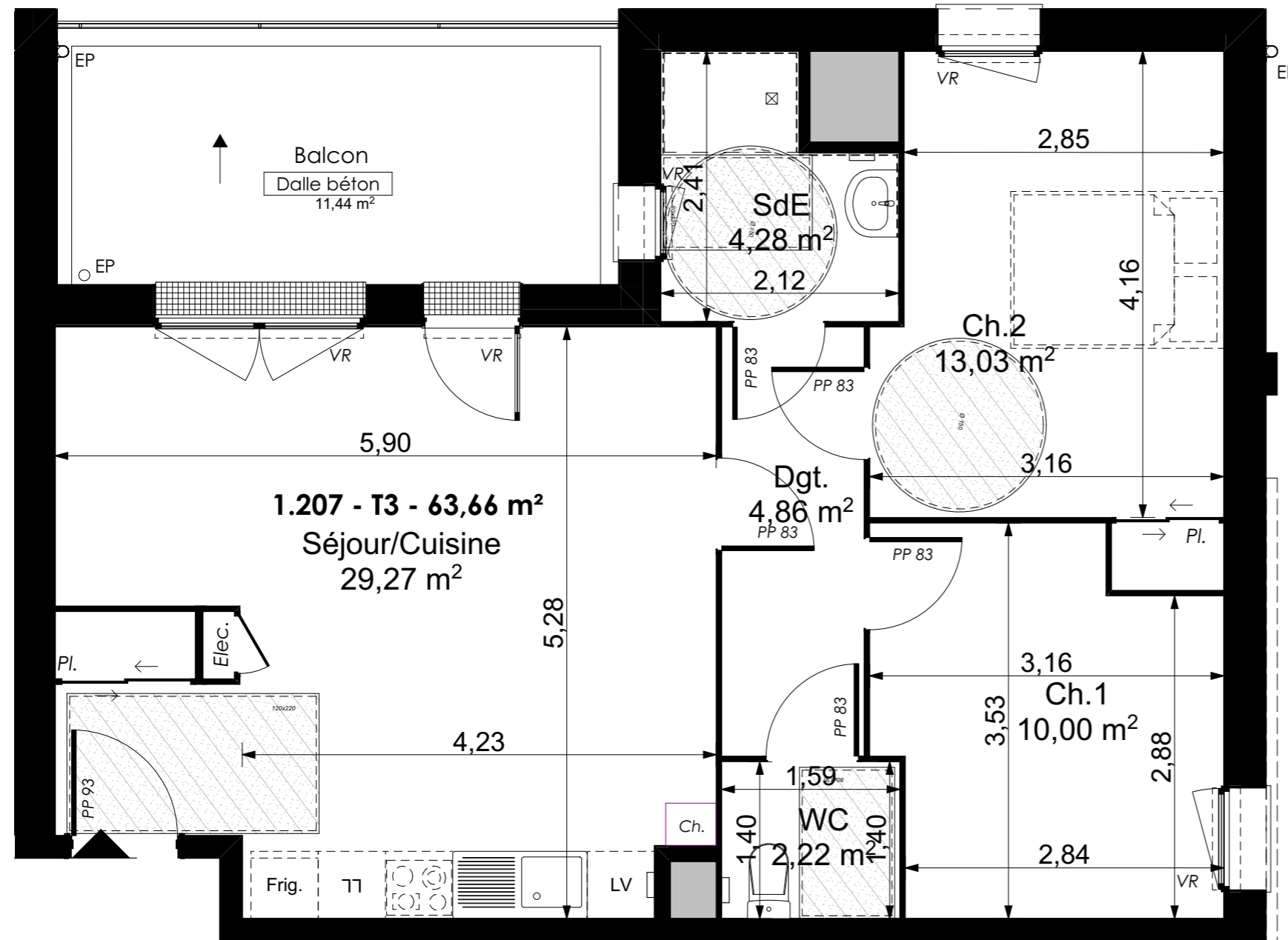


Valloire Habitat 

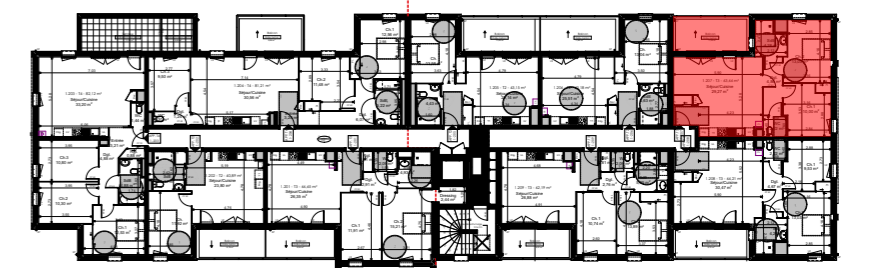
Groupe ActionLogement

28 bis rue du Gros Raisin
45750 SAINT-PRYVE-SAINT-MESMIN

Les BoRéales de Saint-Pryvé



TYPE T3 - LOGEMENT 1-207 R+2		
Séjour/Cuisine		29,27 m ²
Dgt		4,86 m ²
WC		2,22 m ²
SdB		4,28 m ²
Ch. 1		10,00 m ²
Ch. 2		13,03 m ²
Total surfaces habitables		63,66 m ²
Annexes	Surf. Utile	
Balcon		11,44 m ²
Total surfaces Annexes		11,44 m ²
TOTAL SURFACES		75,10 m ²



15/11/2022	Indice C
Ech : 1:50	
0.00 0.50 1.00 2.00 3.00	